

## Positioning elements

with female thread

### SPECIFICATION

#### Types

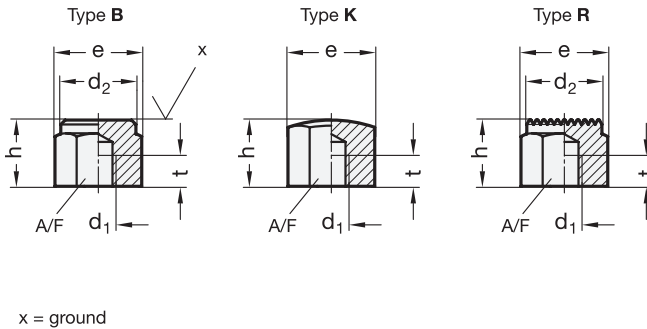
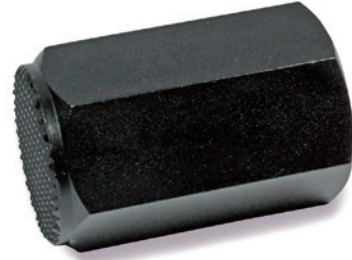
- Type **B**: Smooth contact face
- Type **K**: Spherical contact face
- Type **R**: Serrated contact face

Steel

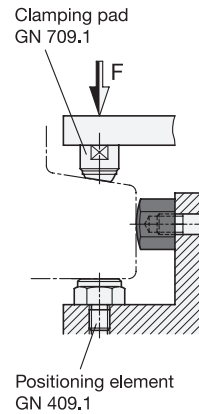
- hardened
- blackened

### INFORMATION

Positioning elements GN 409.2 with male thread are designe for use as locating plungers, stops and thrust blocks.



#### Application example



\* Complete with type index of the Positioning elements

**B**    **K**    **R**

### GN 409.2

Description	h ±0.01 Type B	h ±0.1 Type K/R	d1	d2	t min.	A/F	e	⚖
GN 409.2-15-M8-*	15	15	M 8	17	6	17	19.4	25
GN 409.2-20-M10-*	20	20	M 10	19	10	19	21.9	39
GN 409.2-20-M12-*	20	20	M 12	22	10	22	25.2	52
GN 409.2-25-M8-*	25	25	M 8	17	12	17	19.4	42
GN 409.2-25-M12-*	25	25	M 12	22	15	22	25.2	47
GN 409.2-30-M10-*	30	30	M 10	19	15	19	21.9	61
GN 409.2-30-M12-*	30	30	M 12	22	18	22	25.2	79
GN 409.2-30-M16-*	30	30	M 16	30	20	30	33	136
GN 409.2-40-M10-*	40	40	M 10	19	15	19	21.9	85
GN 409.2-40-M12-*	40	40	M 12	22	18	22	25.2	110
GN 409.2-50-M12-*	50	50	M 12	22	18	22	25.2	142
GN 409.2-50-M16-*	50	50	M 16	30	24	30	33	270

Weight type B

